

# WEE DARNOCK

## WEE DARNOCK

"Wee Darnock" is a fine late 18th/early 19th century manor home. Building began in 1790 and a grand Georgian addition was added around 1810. This exceptionally proportioned home has a 30 foot depth and 10 foot ceilings. Apart from the grand scale of the rooms, other architectural elements include a molded brick cornice, decorative arches, original heart pine flooring and horse-hair plaster. This historically significant home has been meticulously maintained by the present owners.

Mature landscaping and mountain views create a spectacular setting. The property is mostly open with a large pasture, a year around spring and a small stable.

**Number of Bedrooms:** 4 bedrooms

**Number of Bathrooms:** 3 full baths

**House Square Footage:** 3600

**Exterior:** Brick

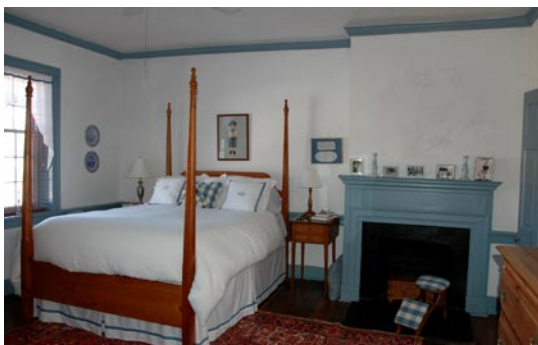
**Roof:** Tin

**Approx Acreage:** 14.36

**Improvements:** Studio/office, small stable

**Address:** 367 Wee Darnock Way  
Lexington, VA 24450

**Price upon request**



**Peter Wiley (434)-293-9992**

**[pwiley@farmandestate.net](mailto:pwiley@farmandestate.net)**

**FRANK HARDY, INC. REALTORS**

**[www.farmandestate.net](http://www.farmandestate.net)**