

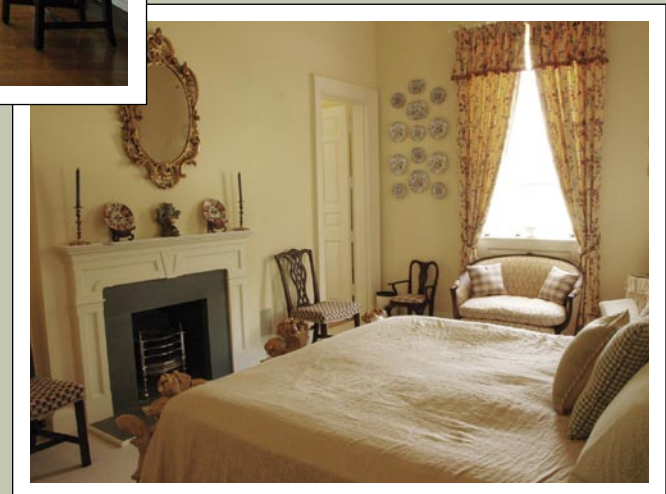
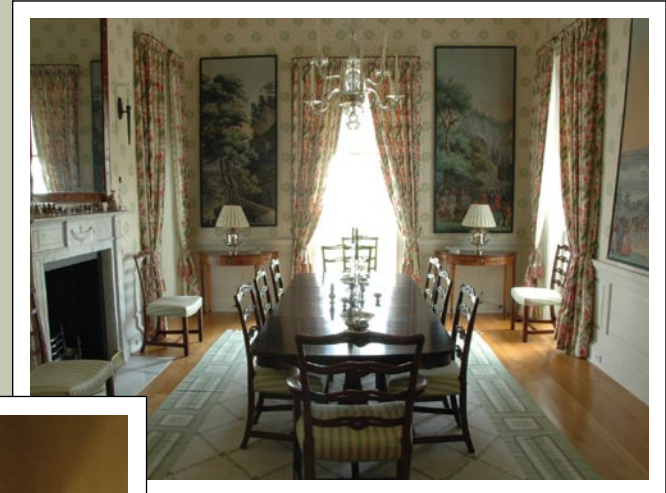
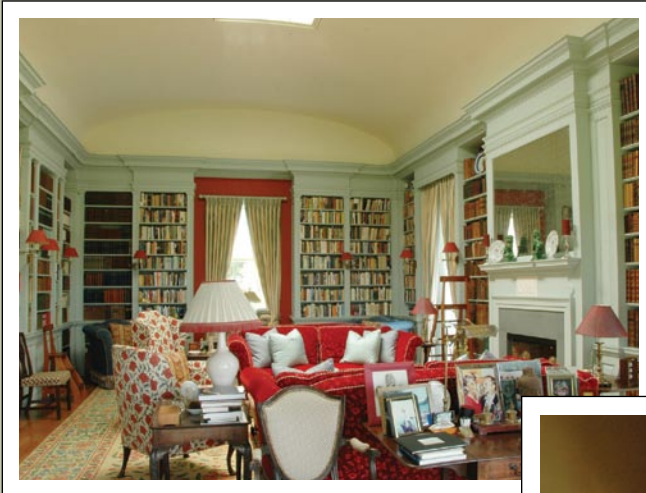
Wareham Farm



Wareham Farm



Along the shores of the Ware River, this 60 acre estate provides a sweeping view of the Mobjack Bay. The manor is situated to take advantage of the vast waterfront views from virtually every room with eastern exposure. Reminiscent of the time in our nation's history when Thomas Jefferson and George Washington visited this area, the palladian villa with copper roof exudes the elegance of Monticello and was the collaborative work of three master designers. The southern branch of the Chesapeake Bay is still home to majestic estates which line the bay, including Wareham. This 6,300-square-foot home features a pillared portico on the entrance front and a columned loggia which overlooks the riverfront.





Estate Particulars

MAIN RESIDENCE: Approached by a cedar lined drive, the home rests grandly at rivers edge. First Floor: The columned front entry leads into an oval foyer with domed ceiling, intricate woodwork, and sandstone flooring complete with curved paneled doorways leading to a powder room and staircase to second floor. Beyond the entry foyer is a large center receiving hall, a 17' cube, with 10' custom triple frame windows framing the view and loggia. The custom moldings and trim, by Gaston and Wyatt of Charlottesville, are vast and detailed and of a quality not often found in today's homes. Arched doorways lead to the symmetrical wings of the home; to the left is the well proportioned drawing room highlighted by an original Georgian Irish marble mantelpiece. Beyond the drawing room is a small well lit office and the grand paneled library with floor to ceiling built-in bookshelves and skylights which add to the natural light already present in the home. This room also features a bow window with spectacular views of the water. A first floor guest suite provides a private space for guests and is complete with fireplace and full bath with walk-in shower. A laundry room and another small office completes the space on this side of the home. To the right of the center hall is a lavish dining room with hardwood floors, Zuber wallpaper panels, fireplace with another Irish mantelpiece, river views and built in cabinets. A brick floored breakfast room and a butler's pantry leads to the gourmet kitchen with brick floors and recessed lighting. Appliances include two SubZero Refrigerators, Thermador double wall ovens, a Viking gas cook top and Bosch dishwasher. The island provides additional prep space and includes a warming oven and built in ice maker. The private master suite overlooks the gardens at the southern end of the home. Found in the suite are high ceilings, large built-in closets with a dressing area and spacious master bath with double vanities, soaking tub, water closet and steam shower completing this wing. The Second Floor : Accessed via a hidden staircase off the main entry foyer, the second floor offers three additional bedrooms of unique configurations, situated away from each other, providing privacy and seclusion. There are two additional full baths and a large room, ideal for a children's playroom or storage, which leads to the widow's walk. Heating and cooling are provided by a 4 zone heat pump system.

WATERFRONT/DOCK: Frontage on the Ware River offers dramatic views of the Mobjack Bay. There is a deep water dock with screened pavilion and boat lift. Wareham is ideally located for the serious sailor or yachtsman, providing great access to the Chesapeake Bay.

THE GARDENS: The property was masterfully planned by landscape architect, Francois Goiffinet who worked in conjunction with the architects to site the house placing the formal gardens to the north and the less formal gardens to the south. Located next to the formal gardens is a small freshwater pond.

DEPENDENCIES: A tenant cottage, large equipment barn and a six-stall barn.

PROPERTY: 60 acres of mostly open and level land along the Ware River, suitable for horses or other livestock. The waterfront portion of the land has a deep water dock and screen house equipped with water and electricity.

LOCATION: At the terminus of a country lane in Gloucester County, Virginia, on the Ware River, just 10 minutes from historic Gloucester Courthouse. Richmond International Airport is slightly over an hour to the west, providing an ideal location for access to regional, national and international flights.



TOPOGRAPHIC DATA SHOWN HEREON WAS OBTAINED FROM U.S.G.S. IMAGES WERE OBTAINED FROM THE COMMONWEALTH OF VIRGINIA (2002).
PROPERTY LINES SHOWN HEREON WERE TAKEN FROM GLOUCESTER COUNTY TAX MAPS AND ARE APPROXIMATE.
NO WARRANTY IS PROVIDED FOR THE ACCURACY OF THE PROPERTY LINES OR OTHER DATA SHOWN HEREON.



SIERRA VIEW MAPPING
5020 SIERRA VIEW DRIVE
SCHUYLER, VIRGINIA 22969
434-831-1243

MAP SHOWING
PARCELS 191A & 191D
GLOUCESTER COUNTY, VIRGINIA
SCALE : 1" = 400' DATE : JULY 17, 2007
REVISED: AUGUST 14, 2007
CONTOUR INTERVAL =5'

PREPARED FOR
FRANK HARDY, INC.



FRANK HARDY, INC., REALTORS
FARM AND ESTATE BROKERS
INTERNATIONAL

CHARLOTTESVILLE CHESAPEAKE BAY MIDDLEBURG RAPPAHANNOCK

*Although the information in this brochure is believed to be accurate, it is not warranted
or otherwise guaranteed and is subject to change without notice.*

Frank Hardy
info@farmandestate.com
CHARLOTTESVILLE OFFICE
417 PARK STREET
CHARLOTTESVILLE, VIRGINIA 22902
TELEPHONE: (434) 296-0134 FAX (434) 296-9730
www.farmandestate.com

Justin H. Wiley
jwiley@farmandestate.net
RAPPAHANNOCK OFFICE
257 GAY STREET
WASHINGTON, VIRGINIA 22747
TELEPHONE: (540) 675-3999 FAX (540) 675-3910
www.farmandestate.net